

Human LAP (TGF beta 1) Protein

Cat. No. LAP-HM4B1

Description

Source	Recombinant Human LAP (TGF beta 1) Protein is expressed from HEK293 with His tag at the N-Terminus. It contains Leu30-Arg278(C33S).
Accession	P01137
Molecular Weight	The protein has a predicted MW of 31.4 kDa. Due to glycosylation, the protein migrates to 38-48 kDa based on Bis-Tris PAGE result.
Endotoxin	Less than 1 EU per µg by the LAL method.
Purity	>95% as determined by Bis-Tris PAGE

Formulation and Storage

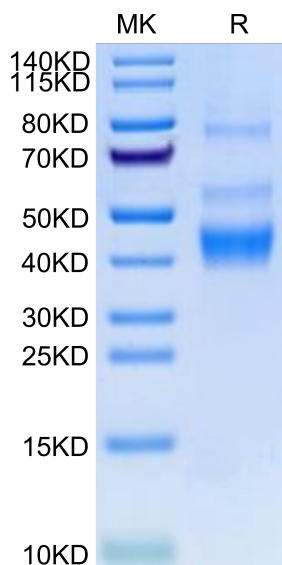
Formulation	Lyophilized from 0.22 µm filtered solution in PBS (pH 7.4). Normally 8% trehalose is added as protectant before lyophilization.
Reconstitution	Centrifuge the tube before opening. Reconstituting to a concentration more than 100 µg/ml is recommended. Dissolve the lyophilized protein in distilled water.
Storage	-20 to -80°C for 12 months as supplied from date of receipt. -80°C for 3 months after reconstitution. Recommend to aliquot the protein into smaller quantities for optimal storage. Please minimize freeze-thaw cycles.

Background

Latent TGF beta 1 cDNA encodes a 390 amino acid precursor that contains a 29 aa signal peptide and a 361 aa proprotein. A furinlike convertase processes the proprotein to generate an Nterminal 249 aa latencyassociated peptide (LAP) and a Cterminal 112 aa mature TGF beta 1. Disulfidelinked homodimers of LAP and TGF beta 1 remain noncovalently associated after secretion, forming the small latent TGF beta 1 complex.

Assay Data

Bis-Tris PAGE



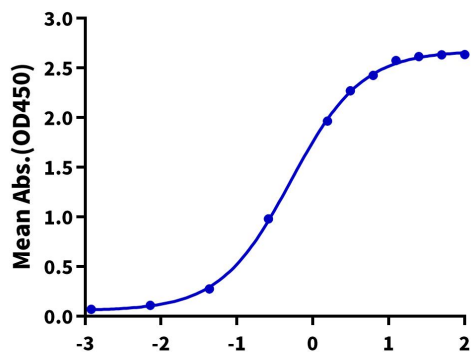
Human LAP (TGF beta 1) on Bis-Tris PAGE under reduced condition. The purity is greater than 95%.

ELISA Data

Assay Data

Human LAP (TGF beta 1), His Tag ELISA

0.5µg Human LAP (TGF beta 1), His Tag Per Well



Immobilized Human LAP (TGF beta 1), His Tag at 5 µg/ml (100 µl/well) on the plate. Dose response curve for Biotinylated Human ITGAV&ITGB6, His Tag with the EC50 of 0.52 µg/ml determined by ELISA.

Log Biotinylated Human ITGAV&ITGB6, His Tag Conc.(µg/ml)